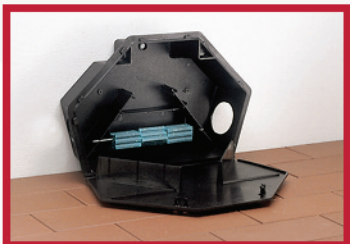


PROTECTA® LP



#1 CHOICE OF PROFESSIONALS FOR A REASON



PRODUCT FEATURES:

- ▶ Versatile Placement Options
 - Low profile allows for placement under pallets and in other tight
 - Can be placed vertically against the wall
 - especially good in wet areas; bait is elevated and water can drain out through the U-bolt holes
 - works with LP Load-N-Lock system
- ▶ Rats Readily Enter and Feed
- ▶ Fast and Easy to Service
 - Lid opens to the wall for unhindered servicing
- ▶ Ultra Durable
 - Wall thickness capable of withstanding harsh environmental conditions
 - Complete with both horizontal and vertical securing rods
 - Child & dog tamper resistant

PRODUCT	CODE	CASE QTY
▶ Protecta LP Black	LP2625	6 stations per case
Protecta LP Gray	LP2635	6 stations per case



More Than Meets The Eye

Madison, Wisconsin 53704 USA | Ph: (608) 241-0202 | Fax: (608) 241-9631

www.belllabs.com