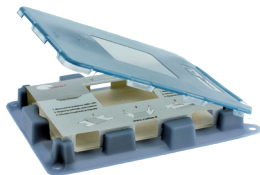


COMBI ROACH TRAP

GLUEBOARD FOR COMBI CASE AND RISTORAT COMBI



COMBI ROACH TRAP
FITS IN THE COMBI CASE AND IN THE RISTORAT COMBI



Insect monitoring glue board



AGAINST

Cockroaches

CHARACTERISTICS

Combi roach traps are essential tools to detect and monitor cockroach populations, indicate the source of an infestation and/or assess the efficacy of a control treatment.

They have been developed to monitor the three main cockroach species *Blattella germanica*, *Blatta orientalis* and *Periplaneta americana* but will also attract other cockroach species.

APPLICATION

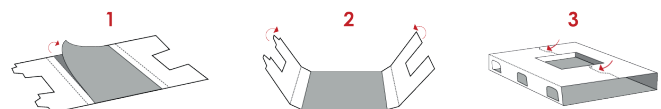
You must peel off the glue protection with a quick and continuous movement and then fold the cardboard as shown on the pictograms on the trap. It is recommended to fix the tabs in their slits to avoid the trap opening.

Insert the **Combi Roach Traps** in the **Combi Case**.

The square hole will help for inspections, so it must be faceup.

Put the traps in the monitoring area considering that roaches prefer humid and warm places or cracks with food debris.

Traps must be checked regularly, preferably each week.



TECHNICAL INFO

MATERIAL


Cardboard adhesive mastic

DIMENSION

14x10,2x1,6 (h) cm

ATTRACTIVE

Food lure incorporated in the glue

COMBI ROACH TRAP		
PACKAGING	CODE	
	box with 10 pieces	TRP-B113